

Proceedings

OF THE
COLLEGE OF UNIVERSAL WISDOM
YUCCAVALLEY, CALIFORNIA

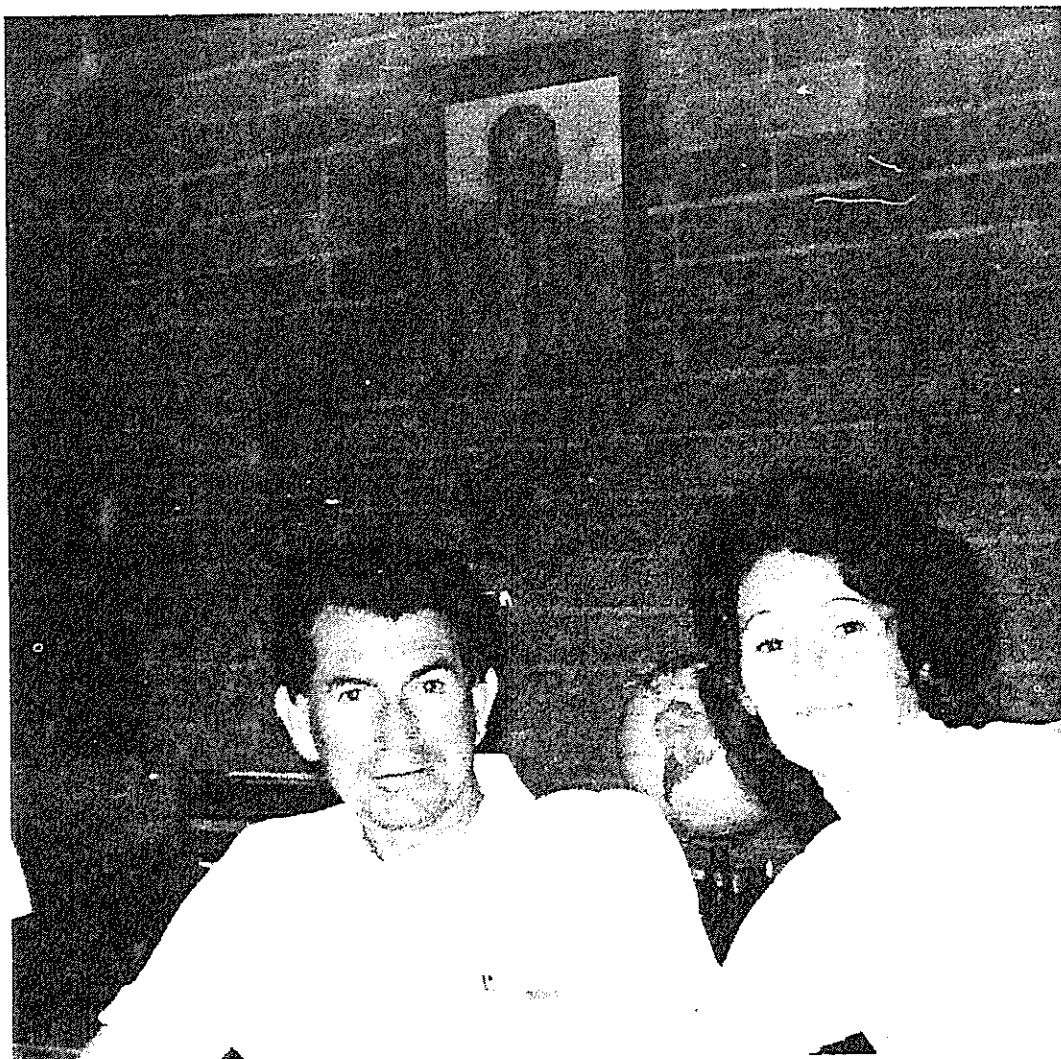
A BRANCH OF THE MINISTRY OF UNIVERSAL WISDOM, INC.

A Non-sectarian and Non-profit Organization
for Religious and Scientific Research.

VOLUME 10

APRIL - MAY - JUNE - 1975

NUMBER 8



Captain Bruce Cathie and wife Wendy

P R O C E E D I N G S
OF THE COLLEGE OF UNIVERSAL WISDOM
Yucca Valley, California

A branch of the Ministry of Universal Wisdom, Inc.

Volume 10

April - May - June - 1975

Number 8

CONTENTS

PICTURE	page	1
EARTH, WHAT ARE YOU LIKE	"	3
"DOWN UNDER" VISITORS	"	10
LETTERS	"	10
REPRINT	"	10
THE PYRAMID PRINCIPLE (Reprint)	"	11

The "Proceedings" is mailed free to those people who request it and financially support its printing by contributions. There is no subscription rate. All donations, checks, money orders, contributions and bequests should be made to the Ministry of Universal Wisdom, Incorporated.

"PROCEEDINGS" are published by the Ministry of Universal Wisdom, Inc., at Yucca Valley, California. Printed in U.S.A. Business and Editorial offices: College Office Building. George W. Van Tassel - Director; Darlene J. Wing - Secretary-Treasurer; George W. Van Tassel - Editor. All rights, including translation, reserved. Manuscripts and photographs from our members or friends must be accompanied by a self-addressed, stamped envelope. As we do not employ solicitors or representatives, please address all correspondence concerning "Proceedings", contributions, donations, bequests, etc., directly to:

THE MINISTRY OF UNIVERSAL WISDOM, INC.
P.O. Box 458, Yucca Valley, California 92284
U.S.A.

OUR 21st YEAR In Publication

KOMSOMOLSKAYAPRAVDA

Moscow, USSR, 31 December 1973

"EARTH, WHAT ARE YOU LIKE?"

When something banal is to be ridiculed, it is usual to make the sarcastic comment that two times two is four, the Volga falls into the Caspian Sea, and that the Earth, naturally, is not square but round. Concerning the Earth, the geologists and geophysicists may not accept those words as truth. In other words, they must admit, and in frankness will fully proclaim, that such a form for the Earth does not entirely suit them. What shape would? Angular. Only after millions of years of motion and the action of many forces did the earth round itself into the form of a sphere; in the beginning, it may have been a colossal crystal.

According to scientists, the buried "boundaries" of the former crystal could have been preserved in the body of the planet; in some places, however imperceptibly, they may even protrude --- like a carcass through taut skin. If only they could be found!

Nikolaj Fedorovich Goncharov knew nothing of these scientific disputes since his interests had nothing in common with the problems of geology and geophysics. He was working by correspondence at a university of the arts and was seriously interested only in ancient cultures. At some point Nikolaj Fedorovich began to mark on a geographical map the seats of ancient cultures. As the number of marks proliferated, there grew a perception of some intangible symmetry. This was really not a perception, but rather a weak intuitive impulse; it was much later, after fate had brought him together with Valery Makarov, an electronics engineer, and Vyacheslav Morozov, a construction engineer by education, that the guesses were shaped into a precise hypothesis.

For five years they studied the facts of unimaginably diverse sciences --- archeology, geochemistry, meteorology, and ornithology; only recently have they decided to present their "mad idea" before the

judgment of specialists. I must caution that the hypothesis asserts nothing, but merely conjectures.

Mathematicians will skeptically add that the sphere may be decomposed in another thousand and one ways. But interesting aspects (of this decomposition) arise when we carefully note, first, where the "seams" pass over the earth, and second, where the points of intersection of all these mathematical figures lie.

If the core of the planet is made up of colossal slabs, then the "seams" between them must appear somewhere. This was the first success of the conjecture: the lines on the map coincided with many mid-oceanic ridges, core faults and zones of active risings and depressions.

Look at the vertices of the triangles. Inexplicable events take place here. One of these vertices is in the region near the Florida peninsula --- the famous "devil's Bermuda triangle." It is famous for the mysterious disappearance of ships and planes which apparently have no time to send an "SOS". They do not sink or fall into the ocean --- they simply vanish without a trace. I. Sanderson, who claims to have assembled all the facts concerning the disappearances, writes in his book that the coordinates of the catastrophes were often only approximations, since the bordering radio stations were usually inactive at the moment of distress. This is not the only infamous region. Sanderson has collected the data and with surprise has discovered that there are ten such tragically strange regions on the earth; moreover, they are symmetrically situated: five above and five below the equator. Had the American investigator thought of adding two more points, the North and South poles, his scheme would have precisely coincided with the model proposed by our authors.

Many scientists subscribe to the thought that volcanic and seismic activity on the earth occurs precisely at the junctures of "slabs", or in terms of our hypothesis, on the edges of the polygons. The authors turned to magnetic maps and found that the centers of all world magnetic anomalies coincide with the vertices of the polygons. How do the authors explain this? In a crystal the most interesting

events take place at the nodes and edges of the lattice. If the hypothesis is correct, then the etched scheme may denote on a more global scale, just such a structural "lattice" running through the planet and which determines many events on this strange crystal known as the earth.

But the authors decided to delve further. Let us take meteorological, geological and similar maps, superimpose the "lattice" on them and see what happens.

What happened was that all global centers of maximal and minimal atmospheric pressure occurred at the nodes of the skeleton. There also coincided the places where hurricanes originate; many currents blow along the edges.

They applied their scheme to maps indicating solar activity; the regions receiving a maximum of radiation coincided with some of the nodes of the system. Other nodes corresponded to gigantic vortices of ocean currents.

Then the maps of ornithologists were studied. Again a correspondence: the principal global regions to which birds migrate for the winter lie at the nodes of the system.

Also the global deposits of ores have been "inscribed" into the structure of the crystal. On a map find the following: the oilfields of North Africa and the Persian Gulf; the metals ring of the Pacific Ocean; the oil-rich region from California to Texas. All these lie along the "seam", that is along the junctures of the gigantic plates. Look at the nodes; in the north of our country, the lines cross over the region of the gigantic Tyumen oil field; at the bottom of the globe, they indicate the richest deposits in South Africa; in South America they "touch/intersect" the huge deposits in Serro de Pasco; in the northern part of that continent, they indicate oil and other deposits in Alaska and Canada. Suppose for the moment that the system is precisely defined. Can you imagine it?

In connection with the disappearances, they do not occur regularly; similarly, it is difficult to find an immutable system at work in many other instances. The authors of the hypothesis put forth the suggestion

that the nodes of the system resemble blinking "traffic lights"; first one set of nodes is active while the rest are "silent", then conversely. What do scientists think of this? They accept as established that during the earth's history, from time to time there have been periods of tectonic-magmatic activation.

When it comes to the ice age, specialists inevitably use the term "refuge of life". On our territory there are three regions where life was saved from the ice. Not surprisingly, these regions also occur at the nodes of the "lattice".

Agreed, said the investigators, that the structural-energy skeleton of the system somehow influences plants and animals. Can man be an exception? After all his is only a biological form. Thus it is time to return to the very first map to see that many ancient cultures --- Egypt, the proto-Indian civilization in Mohenjo-Daro, Northern Mongolia, the ancient culture of Ireland, Easter Island, Ancient Peru, our Kiev and many others --- occur not randomly but precisely at the nodes of the system. Moreover, in recent years there have been sensational archeological finds: traces of a culture in Thailand-Vietnam (dating to 7000 B.C.) indicate the beginning of agriculture 2000 years before the agriculture in the Middle East which up to this time had been considered the cradle of mankind. These new discoveries are also "inscribed" in the system.

Look at the last drawing. 30 such strange objects of gold were found in Vietnam, one --- a bronze --- in France. Their markings are not understood by scientists. Some say that it is a calendar, others that it is an astrological symbol. As you may have guessed, our authors have their own interpretation: does this object not resemble the above structural model in number of edges and nodes?

Well, this is all that I wished to relate from the words of the authors concerning this surprising hypothesis. I have only to add that many scientists are aware of it: N. Goncharov, V. Makarov, and V. Morozov were heard by many at sessions of various scientific societies in Moscow. Judging from the comments made, including official ones, the authors are praised for

their professional expertise; understandably, not all their conclusions are agreed to, but it is significant that the disagreements are conducted in a serious manner without condescension to "amateurs".

It is possible that having precisely and thoroughly analyzed the hypothesis, scientists will simply throw up their hands and say: sorry, but it's not true ...

But the other alternative is also possible. And then ...

N. BODNARUK

(Our thanks to Andy Pincon for this information.)

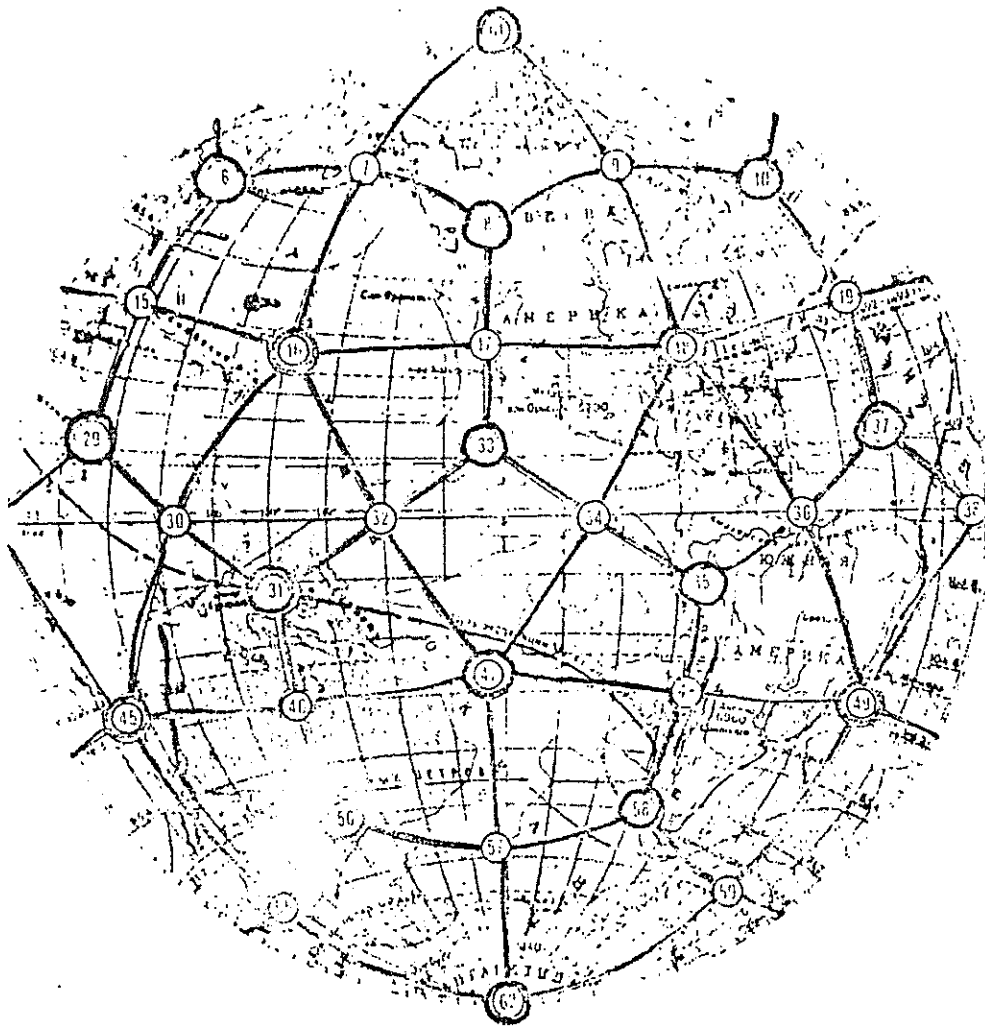
Now it would be interesting to see if some of our readers have the time, the ability, and the patience, to super-impose the Russian grid on the Bruce Cathie grid and see what they come up with. It is possible that the Cathie grid will verify the "crystal ball", we call the earth, as hypothesized by the Russian grid system. We are going to see that a copy of the grid system printed here is mailed to Bruce Cathie.

Bruce Cathie's books "Harmonic 33", and "Harmonic 695", may be ordered from New Zealand through any large book store.

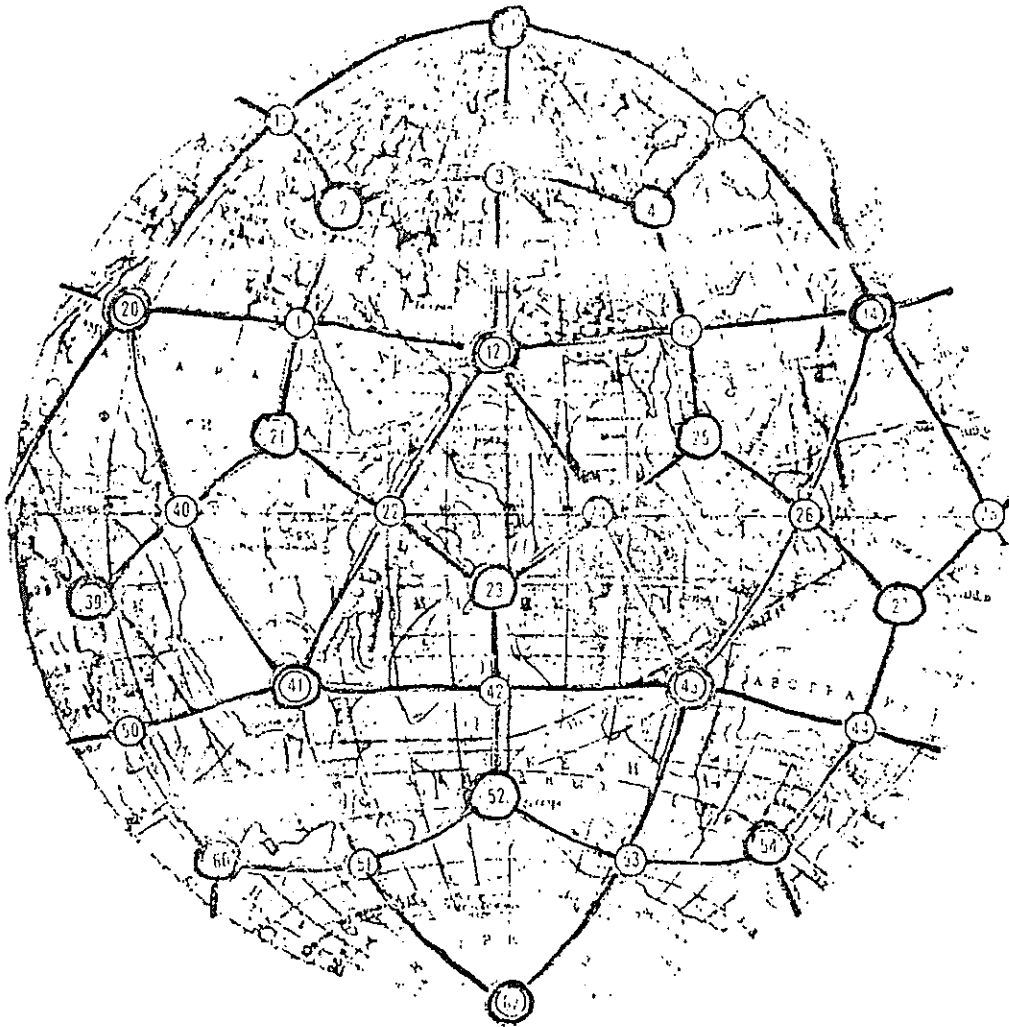
The pictures of the Russian grid interlace on pages 8, and 9, seem to present a study that can be followed by any of our readers, with the possibility of adding other aspects. Any information that we come up with here will be printed in future issues of the "Proceedings".

ZIP CODE AND ADDRESS

If your zip code is not on this issue of the "Proceedings" as it is addressed to you, we do not have it in our file.



Look at the photograph of the globe with light and dark lines drawn upon it. These are two so-called "coverings/dissections" of the earth. The light lines form a sphere consisting of 12 pentagonal slabs. The first simple model of the earth took just such a form - as a dodecahedron. It is very surprising that only recently, while reading the ancient Greek philosopher Plato, did one of the authors find this passage:



"The earth, viewed from above, resembles a ball sewn from twelve pieces of skin." It turned out that not only Plato, but also all the Pythagoreans thought of our planet in this way. We postpone our amazement and turn to the other scheme in which the "ball" is sewn from 20 triangles. This is an icosahedron. If both of these coverings are superimposed on the globe (as was done by the authors), that will be the structural energy skeleton of the earth.

"DOWN UNDER" VISITORS

We were pleased to entertain Captain Bruce Cathie, his wife Wendy, and their two sons Stephen and Mark for several days.

Bruce has been an airline pilot for 27 years, and for the last 20 years has flown for New Zealand National Airways. He is the author of "Harmonics 33", and "Harmonics 695". We had a good chance to calculate local grid harmonics with Bruce and verified that the "Integratron" centers on a grid cross harmonic.

Wendy Cathie is a lively laughing, vivacious person and keeps a happy atmosphere around wherever she is.

We discussed the "Russian Grid System", printed in this issue of the "Proceedings". Bruce is going to overlap the Russian system with his power grid system and see what correlates.

We saw them off at the Palm Springs airport, and they are now back in New Zealand.

LETTERS

Some of our readers do not get answers to their letters because of time. Technical questions involving the principles of energy relative to the "Integratron", pyramid power, etc., can only be answered by Mr. Van Tassel. His work here involves at least 12 hours a day now, so he cannot take the time from this important work to write pages to answer these letters.

Mr. Van Tassel may be consulted by appointment, either by phone, or letter.

REPRINT

We are reprinting the article "The Pyramid Principle" in this issue of the Proceedings.

There has been a heavy demand for this article and we have run out of back issues and have had to make many photo copies. We do not like to reprint material but occasionally this is necessary.

THE PYRAMID PRINCIPLE

Orthodox science is now beginning to find that the energy we have been writing about for 18 years, really exists. In the scientific research conducted by Dr. Luis Alvarez, who won the Nobel prize in physics in 1968, standard scientific principles were used. The idea was that cosmic rays passing through the pyramids would reveal any chambers that have not been found yet. A cosmic particle recording device would show less loss of energy on passage through a hidden room than it would through solid stone. This research involved several institutions as well as governmental agreement between both the United States and the United Arab Republic.

Magnetic tapes, which recorded the data, were run through the most modern computer to analyse the results. The tapes revealed that a pattern could not be established from which to establish a stable zero point of reference, and every time the tapes were re-run, they gave a different pattern of readings. Not only were the patterns different, but certain data disappeared from the tapes. The final conclusion was that what was occurring was not only impossible, but some energy was being registered that does not conform to the laws of science.

Vern Cameron, of Elsinore, California, was conducting experiments 30 years ago in order to try to understand what this energy is that does not conform to known scientific laws. Vern found out that meat could be preserved for an indefinite period of time, after being subjected to this unknown energy generated by a small pyramid. He also found that a razor blade could be used to shave with over a hundred times, before it lost it's sharp edge, when placed under his small pyramid.

In collaborating with Vern, we not only verified his results, but also found that an egg in a saucer would solidify under the pyramid in a week, while one outside of the pyramid in a saucer remained fluid. Milk kept in a carton with a pyramid shaped top will also keep fresh for an indefinite period of time without refrigeration. This is now patented in France where cartons are used for dairy products.

The common denominator in all of these findings is that the shape induces the energy. It must be a four sided pyramid, and the most energy results from a 52° angle on the sides. The most powerful results are obtained when the pyramid is oriented with the sides parallel to north, south, east and west directions.

Tests we have conducted, over the years, prove that the corners are the operational necessity as holes cut in the sides do not detract from the generating force. Another point that we discovered, is that in order to achieve maximum energy, the pyramid must be fastened down, so it cannot be disoriented. The maximum energy requires 28 days, one magnetic month, to reach it's peak. We also discovered that a quartz crystal peak on the top, where the capstone should be on the Giza pyramid, will produce other effects. We believe that a laminated quartz condenser, with germanium separating the quartz sheets, on top of the pyramid will produce energy readings on present scientific instruments. Due to lack of money, we have not been able to conduct other tests that should produce electric power for use.

It is our firm conviction, after years of analysis, that the Great Pyramid of Giza, was used to produce power, used for rejuvenation, used to make mummies, used to restore life, and used as a launching power to start space ships out of the earths gravity.

One of our associates in Park Ridge, Illinois, has accomplished levitation with single pyramids and a group of four pyramids. She has established a "norm" where the point of levitation of either hand will occur. She has established that some of the charge will remain for a period of three days; and that from the original point of first levitation, that the time diminishes from 7 minutes and 45 seconds, down to 45 seconds in five exposures. She also discovered that "dowsing rods" activate over the pyramid in the lowest level of her home, and activate equally as strong upstairs in the highest level of her home. This same associate also discovered ancient Hebrew and Greek root meanings to words in the bible, which we printed in the "Proceedings" ten years ago, do translate into modern English meanings. We printed this in offering a comparison between our "Integratron" and Mose's Tabernacle.

Capt. Bruce Cathie, in his first book "Harmonics 33" and in his second book, "Harmonics 695" shows by physical proof and mathematics that the power grid system of

the earth involves the Great Pyramid and the Stonehenge circle in England.

Application of "natural power" can be used to increase crop growth, eliminate destructive insects; used to diagnose disease and the treatment of it; used for interplanetary communication, the preservation of food, a power source for transportation and other things too numerous to mention. The only requirement to use this "free energy" is our ability to couple into it, store it and transmit it. First of course it must be accepted by the scientists, and an economic system of exchange devised to permit it's use. These two requirements are the barrier which loggerhead profit and power hungry opponents will not accept to make a "heaven on earth" possible.

The builders of the Great Pyramid had to know science beyond our present knowledge because the Pyramid measurements incorporate the speed of light, the mass of the planet, the acceleration of gravity, weights and measures, the axis of polar rotation, the distance to the Sun, the 26,000 year procession of the equinoxes, the Earth's magnetic field, the Earth's orbit around the Sun, the value of trigonometry, and latitudes and longitudes among many other things.

The stones in the Great Pyramids structure weigh up to seventy tons. Granite was used to encase the Kings Chamber because granite produces a "piezo-electric" effect due to the matrix of quartz crystals, mica, and feldspar. The bulk of the pyramid of Giza is limestone which has no electrical ability. The granite chambers above the Kings Chamber form a granite air condenser for energy storage. The Kings Chamber was built off center purposely to place it in the power area of the energy generated.

On the Great Seal of America, printed on the one dollar bill, we see the pyramid with the capstone removed upward. In the center of the capstone is the all seeing eye and the capstone is surrounded with the radiance of power. The spirit is supposed to go upward at death. Pyramids apex upward as do cones and church spires. Coils are spiral. I.R.I. in spirit is

the same as IRIS in the eye. The centering focus of all seeing, light, and energy. Pyramid means fire, or light, in the center. The word "spirit" comes from the Latin Spirare. Spire is "a body that shoots upward to a point". The Accadian word Pir, or Bir meant light.

All of nature spirals. Spiral nebula, spiral vines, spiral rising smoke, spiral water running down a drain. The structure of cells in a hair are spiral, the D.N.A. of life is spiral, as are coils to activate magnetism in the cores. Pir-a-mid is to activate light energy in the center.

If you look at the Sun in the morning as it comes up, you will see a spiral cone shape surrounding it. This is the same spirit energy the pyramid generates which the ancients called the "Shekina Glory". Electricity, magnetism, and gravity, are side-effects of spirit energy.

The pyramid was called K-HU-TI by the Egyptians, and K-HU in Egyptian means "The Luminous One". HU is HUE now, meaning a mixture of colors.

One of the peculiar puzzles, to those who have spent any time in the Kings Chamber, is the intense bone-chilling cold that is felt, like it was inside of the body.

In the secret alchemy of The Emerald Tablet, the "formula of life" and the mathematics of the "mystery laws" apply to the Great Pyramid. The four elements, fire, water, earth, and air coincide with the four faces. The three principles of alchemy, circulation, fusion, and spagyric equasion are parallel to the three sides of the triangular shape of each face. The reciprocal action in a living instrument produces Universal Harmony, or life energy.

The sarcophagus follows the "Node of Nature" which doubles the cube, and produces cubical crystals in gold, silver, and salt.

We are anxious to apply the pyramid principle to make a refrigerator. We believe a two story high pyramid with a conveyor belt feeding it through one side, would shrink city garbage to one-quarter of its volume and could be shipped dry as a land mulch to agricultural areas.

A pyramid shaped top on a storage shelf for food, open on all four sides, would preserve fresh foods and fruit without refrigeration. These principles have already been proven on a small scale.

Resonance of any object depends on its shape, the same as the shape of an airfoil must correspond to the airflow in order to prevent resonance. Resonance is the reciprocating action in spirit that makes things live. In matter and physical things, resonance can be in discord and cause things to break. This has happened in the construction of new buildings, where the city noise and traffic have caused buildings to collapse because the structure in steel was a framework of cubes. A resonance that might be in harmony with a sphere might also be in discord with a cube. Shapes are a science in themselves, long ignored by scientists. Ancient symbols are each a separate scientific principle of applications of energy for different purposes.

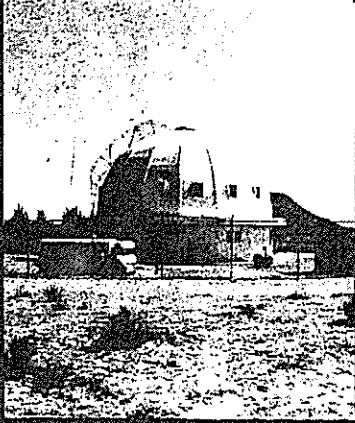
The pyramid principle of power will create a "Cube of Infinity", a "Cone of Silence", a "Capstone of Eternal Youth", a "Sarcophagus of Preservation", and a "Vortex of Cosmic Power". The transmutation of matter can also be accomplished with the pyramid power.

It was found that the mummified flesh when ground to a powder and taken internally served as a cure-all for all internal ailments and caused broken bones to heal back together in a matter of minutes. Therefore mummy matrix was a common cure and sold in apothecary stores. The energy that caused the body to mummify was stored in the flesh and was the potent healing agent.

Those of you readers who are interested in conducting tests and making pyramids should remember that the critical thing is to make the sides on a 52° angle. The best size is around a foot to 18 inches high. The pyramid can be made of cardboard, hardboard, metal, plastic, or any other material. The corners can be attached with tape, or glued. Holes can be cut in the sides without affecting the energy. The pyramid should be fastened down on a fixed shelf, or bench, with the sides oriented with a compass. The east and west sides should be parallel to north and south.

Continued on page 16

Proceedings
OF THE COLLEGE OF
UNIVERSAL WISDOM



P.O. Box 458
YUCCA VALLEY, CALIFORNIA
U.S.A. 92284

FIRST CLASS

If a series of pyramids are used and a wire is run from the top of one to another with the end wire running to a coil wrapped around a piece of iron pipe, it will be possible to direct the energy in a cohesive beam, like laser, to an undetermined distance. The beam can be turned, like light, by reflecting it off of a mirror. A plastic tube should be slipped over the coil and pipe. Winding spacing and wire size are not critical. The wire should be insulated. We would be interested to see what this beam does when run through a prism.

There are an unlimited numbers of tests that can be done which haven't been tried yet.

We believe this energy which responds to some optical laws and some electrical laws, will be the energy that replaces atomic, and fossil fuels for the ultimate power for all purposes.

We are working on an instrument which will detect and measure this energy.